

DESIGNATING OF WATERSHEDS AND SUB-BASINS IN AEGEAN AND MEDITERRANEAN REGION PROJECT

Name of the Project: Designating of Watersheds and Sub-basins in Aegean and Mediterranean Region, Establish of Annual Average Sediment Yield Values, Creating Erosion Risk Maps

Name of Corporation : Republic of Turkey, Ministry of Environment and Forestry

State of Project : Completed.

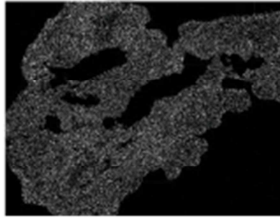


Application Link: <http://aris.cob.gov.tr/erz/>

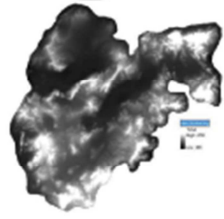
The Scope and Objective of the Project:

In this study, it is aimed to establish totally sediment values and creating erosion risk maps in 11 watersheds. The pilot watersheds are given as; Kuzey Ege, Gediz, Küçük Menderes, Büyük Menderes, Batı Akdeniz, Burdur, Doğu Akdeniz, Antalya, Seyhan and Ceyhan watersheds. Within the project, in these 11 watersheds, it would be defined the basins and sub-basins, annual sediment values that transported by rivers and created erosion risk maps. Also, every watershed would be classified key to Water Framework Directive in its own right and its own methodology.

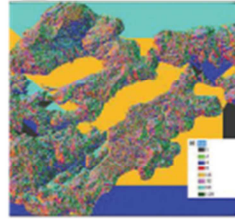
Within the scope of the project, dynamic maps would be created by using algorithms and models that developed by Ankara University.



Burdur Havzası'na ait 'Flow Accumulation' görüntüsü



Burdur Havzası'na ait 'Yükseklik Modeli (DEM)' görüntüsü



Burdur Havzası'na ait 'Flow Direction' görüntüsü



Havza Adı	Alan (ha)	Sediment Miktarı (Ton/Yıl)
Havza 1	237.574,9	118,3
Havza 2	192.168,3	95,7
Havza 3	153.718,2	76,5
Havza 4	43.882,9	21,8
Toplam	627.344,3	312,3



Burdur Havzasının alt havzaları, akarsuları ve gölleri



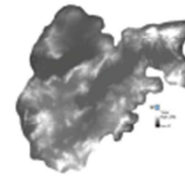
Burdur Havzasının alt 'Draine Line Processing' Görüntüsü



Burdur Havzasına ait 'Draine Line Processing' Görüntüsü



Burdur Havzasına ait 'Catchment Grid Delineation' Görüntüsü



Burdur Havzasına ait 'Fil(sink)' Görüntüsü